

NEWSFLASH #12

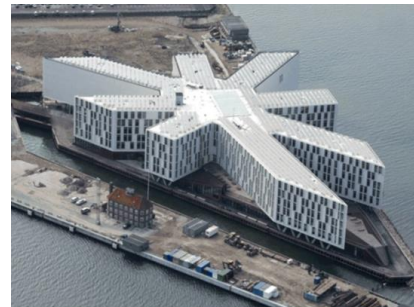
September 2014

THE 2ND PTD GLOBAL CONFERENCE HR IN SCM

28th - 30th October 2014, Copenhagen, Denmark

Since the first PtD conference in Geneva, Switzerland in 2011 there has been significant international and country based activity in pursuit of our vision;

'to build global and national capacity to implement evidence-based approaches to plan, finance, develop, support and retain the national workforce needed for the effective, efficient and sustainable management of health supply chains.'



Under the theme of 'People Must Deliver: Workforce excellence is essential for sustainable health supply chains' the 2nd People that Deliver Global Conference on "Human Resources in Supply Chain Management" will showcase a variety of international and country based activities.

Register for the two day Conference and Workshops

You can register for the Conference here:



<u>Mon., 27 Oct. 14</u>	<u>Tue., 28 Oct. 14</u>	<u>Wed, 29 Oct. 14</u>	<u>Thu. 30 Oct. 14</u>
Half day PtD Working Group Workshop	Half day Leadership Workshop	Main Conference	Main Conference

Conference Program

The detailed [Conference program](#).

General Conference Information

More information on the Conference venue, hotels and transportation, can be found [here](#).

Conference Invitation Letter

A generic invitation letter is provided for you [here](#). For those of you who have registered for the Conference, a personalized invitation letter will be emailed to you. You can register for the Conference [here](#).

Visa

In the event that you need a visa, please contact info@peoplethatdeliver.org to be issued a personalized visa letter. We strongly recommend you start your visa application process as soon as possible to avoid any delays.

Major Financial Sponsors:

Imperial Health Sciences, John Snow Incorporated, USAID



This conference is brought to you by the People that Deliver Board

CONTACT

info@peoplethatdeliver.org | www.peoplethatdeliver.org | [@PtthatDeliver](https://twitter.com/PtthatDeliver)

HEALTH SUPPLY CHAIN COMPETENCY MAPPING IN NAMIBIA

In February 2014 People the Deliver published the [PtD Competency Compendium](#) for Health Supply Chain Management. With support from USAID, People that Deliver had an opportunity, through the SCMS Program, to trial the application of the compendium in the PtD Focus Country, Namibia.

[The technical document](#) explains the methodology on how the compendium was applied, and outlines key outputs and lessons learnt. Including:

- Competency maps for SCM cadres working within the central medical stores, and
- SCM competencies not covered by existing cadres but essential for an effective system.

The purpose of this technical assistance activity in the PtD–Namibia collaboration was to outline the domains and competencies required for the workforce at the central and regional levels of the supply chain by trialling an approach of applying the recently published PtD Competency Compendium.



Photo Credit: USAID | DELIVER PROJECT

This information will be the foundation for a review of job descriptions and education approaches for these cadres in Namibia.

It is hoped that this technical report will enable other countries to effectively consider the competencies required by cadres engaged in SCM in their context, as one of the building blocks for sustainable development of the human resources engaged in health supply chains.

7 HABITS OF EFFECTIVE SUPPLY CHAIN PROFESSIONALS

“Habits are powerful factors in our lives. They are consistent, often unconscious, patterns that constantly express our character and produce our effectiveness - or ineffectiveness.” Pamela Steele, PtD Research Working Group Lead.

In June 2014, Pamela Steele, invited members of the International Association for Public Health Logisticians (IAPHL) to participate in an online discussion on *‘the habits of a highly effective health supply chain practitioner’*.

The contributions made by the IAPHL members are summarized [here](#). After you've read the summary, ask yourself if you possess all the habits, and if not, which habit would you like to form as a priority if you are a health supply chain professional? Do you have the knowledge, skill, and desire to form this new habit?

This discussion summary will be used with other inputs in the PtD Health Supply Chain Leadership workshop, part of the [2nd PtD Global Conference on HR in SCM](#) 27th-30th October 2014, Copenhagen.

CONTACT

PTD FOCUS COUNTRIES: STAKEHOLDER MAPS FOR SUPPLY CHAIN MANAGEMENT ACTIVITIES

In January 2014, stakeholder maps for the seven PtD Focus Countries were completed by the PtD Technical Working Group, with support from John Snow Inc.

It is envisaged that these maps can be used to enhance cooperation and avoid duplication at the country level. Being more aware of the stakeholders involved in a country context and their activity may also help in leveraging expertise and resources in an increasingly resource constrained environment.

The Stakeholder maps are on the PtD website, under [Focus Countries](#) or you can access each map, by clicking in the country links below.



RESULTS OF THE PTD BOARD ELECTIONS



PtD Chairperson

In July 2014, The PtD Board endorsed Benoît Silve to continue for a second two year term as the PtD Chairperson from October 2014. Benoît has been the Director General of the Bioforce Institute since 2003. Benoît has striven to develop collaborative strategies to strengthen the humanitarian community through training, capacity building, and public awareness building actions.



PtD Deputy Chairperson

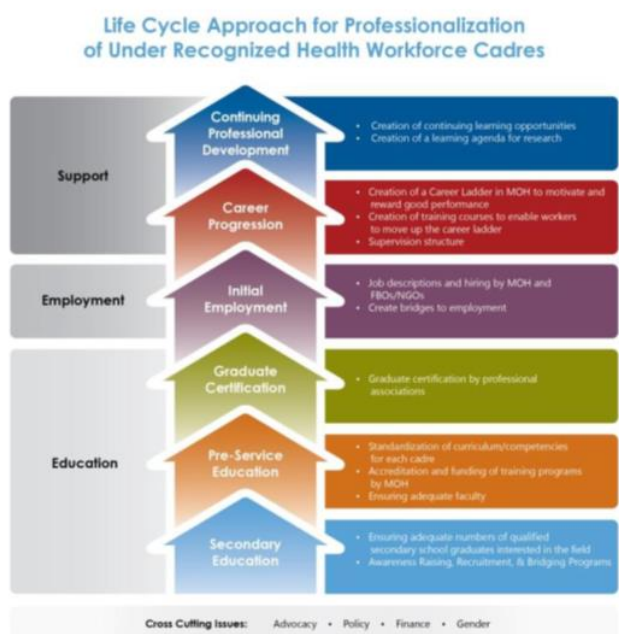
Erin Hasselberg has been appointed the next Deputy Chairperson for the PtD Board. Erin is the Principal Advisor, Human Resource Capacity Development for Supply Chain Management System project (SCMS). Erin has worked in public health supply chain management for 10 years and currently manages the capacity development portfolio for SCMS' global activities across 22 field offices globally. She takes up her initial one year term in October 2014.

CONTACT

SUGGESTED RESOURCES FROM THE EXECUTIVE MANAGER

Recently published

- [Professionalization of under-recognized Health worker cadres](#) – CapacityPlus. A life cycle approach to professionalization is presented moving through elements of education, employment and support.
- The [Promising Practices in Supply Chain Management](#) a series of briefs - a new supply chain management resource from the UN Commission on Life saving commodities including a specific brief on HR for SCM.
- [Report](#) on study tour to LOGIVAC Health Logistics Training Center at Regional Institute of Public Health in Ouidah, Benin by Addis Ababa University.



BRING YOUR CONTRIBUTION

- Join a PtD working group
- Become a PtD Twitter follower (@PplthatDeliver)
- Update [LAPTOP](#) with SCM courses offered by your own institution
- Submit your SCM tools to the [PSM Toolbox](#)
- Tell us your HR for SCM stories or projects
- Advocate for HR for SCM within your organization

For more information, contact:

The Secretariat: info@peoplethatdeliver.org

The Executive Manager: executivemanagerptd@unicef.org

UPCOMING EVENTS

Sept 30 – Oct 3, 2014: **Third Global Symposium of Health Systems Research**, Cape Town, South Africa.

Oct 20-24, 2014: **RHSC Annual Meeting**, Mexico City, Mexico.

Oct 27, 2014:
PtD Working Group Workshop, Copenhagen, Denmark.

Oct 28, 2014:
PtD Leadership Workshop, Copenhagen, Denmark.

Oct 29-30, 2014:
2nd PtD International Conference on HR for SCM, Copenhagen, Denmark.

Oct 31, 2014:
PtD Board Meeting, Copenhagen, Denmark.

Nov 17-19, 2014:
7th Global Health Supply Chain Summit, Copenhagen, Denmark.

CONTACT