

‘Workforce excellence is essential for sustainable health supply chains’

PEOPLE
that
DELIVER

The Goals and Progress of PtD

Andrew Brown
Executive Manager PtD
29 October 2014

Financial sponsors:



The People that Deliver Initiative

PEOPLE
that
DELIVER



Improving health outcomes by promoting sustainable workforce excellence in health supply chain management

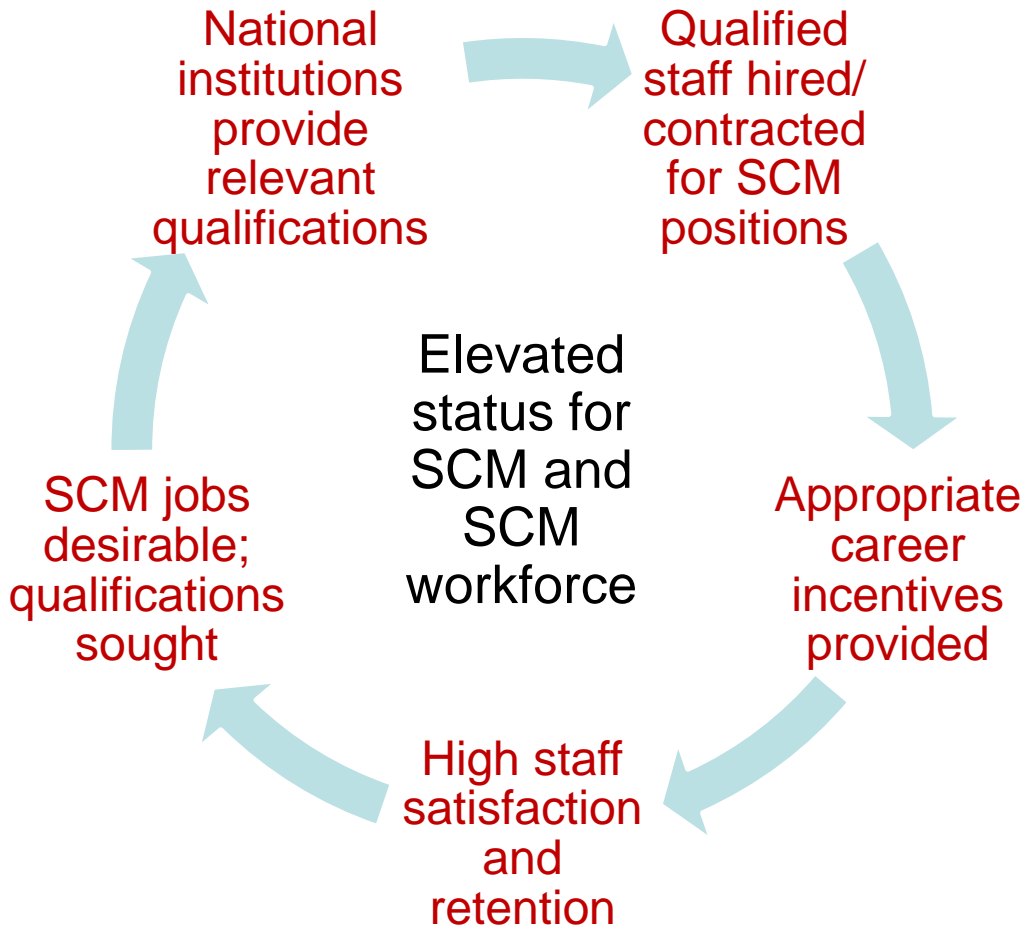
70+

member
organizations

- country governments
- international agencies
- academic institutions
- implementing partners
- Non-governmental organizations
- private companies

The desired paradigm for HR in SCM

PEOPLE
that
DELIVER

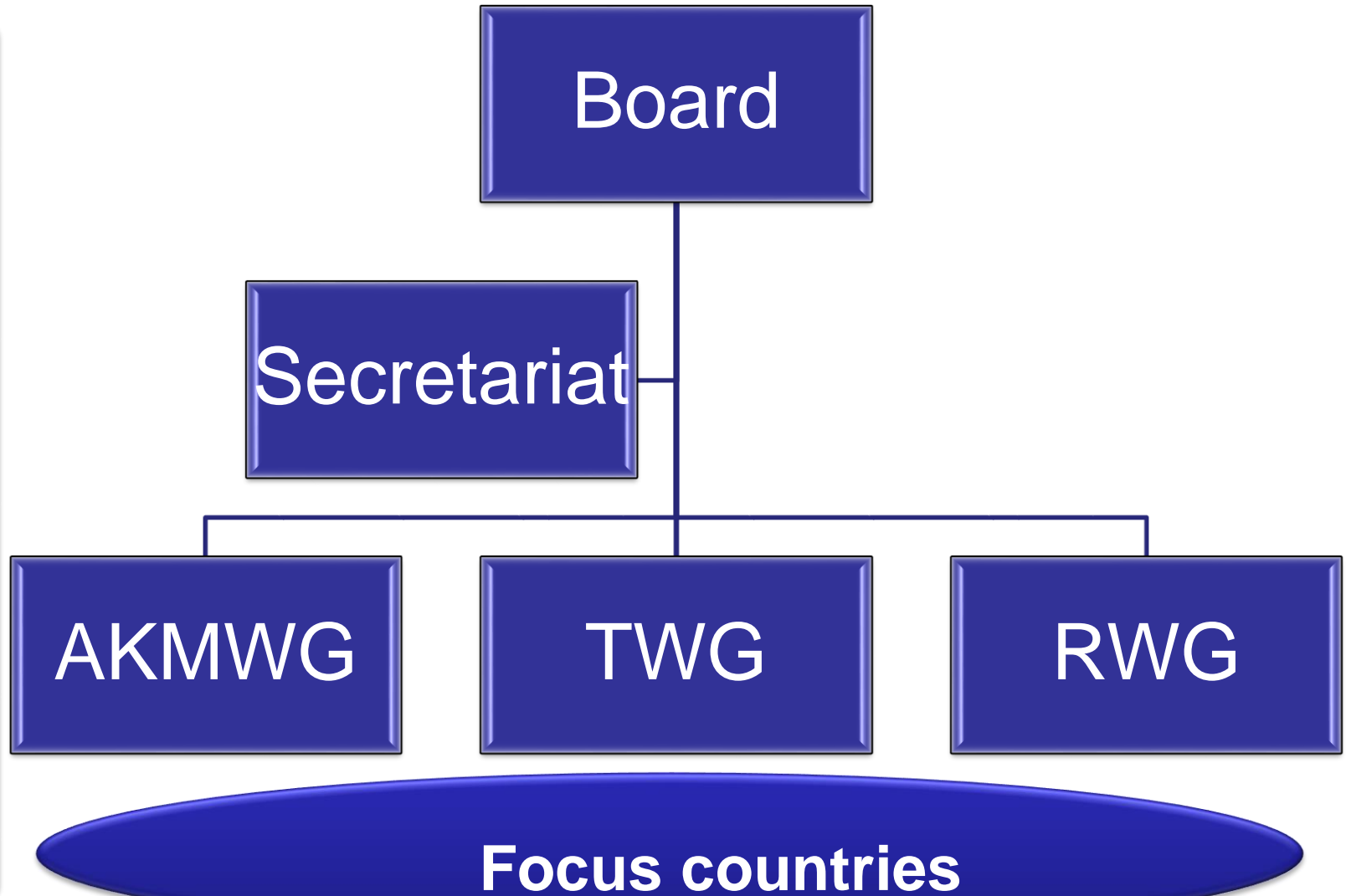


Characteristics

- Long term focus
- Requires reform of perceptions, policies and practices
- Converts existing expenditures into investment
- Capacity benefits accumulate over time
- Inherently sustainable and country-driven

Structure of PtD

Members



The PtD Board:

PEOPLE
that
DELIVER



PtD Focus Countries

PEOPLE
that
DELIVER

Dominican Republic



Ethiopia



Indonesia



Burkina Faso



Liberia



Mozambique



Namibia



Four PtD Strategic Goals



I. **Global recognition** that strong supply chains are essential for positive health outcomes and require a competent, recognized and supported supply chain workforce with significant technical and managerial capacity.

II. **Government and national health institutions** demand, recruit and retain appropriately qualified personnel for positions with supply chain responsibilities.

III. **Adequate personnel from relevant cadres** with appropriate supply chain competencies and qualifications are available.

IV. **A repository of evidence-based resources** for HR for SCM is established, accessible, used and disseminated.

PtD Goal 1 – Global recognition



PtD, through its Secretariat and members has been active in:

- ✓ Direct contributions to global supply chain strengthening activities, including **UN CO LSC promising practices brief, GAVI supply chain strategy, WHO/AMDS report to World Health Assembly** (on Access to ART).
- ✓ Advocacy presentations to: DFID, Global Fund PSM, World Bank, UNFPA, and UNICEF

PtD Goal 2 – Country government action



PtD, through its members has been active in:

- ✓ HR for SCM assessments completed in at least 12 countries.
- ✓ **Burkina Faso** - Regulatory changes implemented to delineate SCM cadres, development of academic course & public service structural change. Health logisticians have been deployed in 17 districts.
- ✓ **Ethiopia** - Govt. HR planning process engaging SCM partners with a focus on: education and standards. Newly formed HR for SCM task force is accelerating momentum.
- ✓ **Indonesia** - PtD Indonesia national working group, one gate policy with engagement of SCM partners, professional grouping of provincial SCM leaders with national networking through WHO knowledge gateway link.

PtD Goal 3 – Adequate personnel trained



PtD, through its members has been active in:

- ✓ **Benin** - LOGIVAC center at the L'Institut Régional de Santé Publique (IRSP)
- ✓ **Burkina Faso** - University of Burkina Faso, Bioforce
- ✓ **Ethiopia** - Jimma University, Govt lead
- ✓ **Namibia** - University of Namibia, USAID
- ✓ **Pacific Island Countries** - University of Canberra, UNFPA
- ✓ **South Africa** - African Supply Chain Academy, IHS & Divinci UNI.
- ✓ **LAPTOP (Learning & Professional Training Opportunities)** - RHSC

PtD Goal 4 – Tools and resources



The following tools are now available:

- ✓ **Advocacy tools**. Who is PtD? Why focus on HR in SCM? and how to make smart investments in HR for SCM
- ✓ **Assessment and planning**. HR for SCM Assessment Guide and Tool (USAID|DELIVER), has been used in at least 12 countries: Burkina Faso, Dominican Republic, Ethiopia, Guatemala, Indonesia, Liberia, Namibia, Nicaragua, Rwanda, Senegal, Zimbabwe
- ✓ **Competency mapping**. The PtD Competency Compendium for Health Supply Chain Management (University of Canberra). With technical advise following application in Namibia through SCMS.
- ✓ **Funding**. Country Guide: Applying for Public Health Supply Chain Management Development Funds

Workforce excellence is essential for sustainable health supply chains

PEOPLE
that
DELIVER

- **Listen & learn** from your peers



- **Share** your experiences



- **Plan** how you will **act**





Working toward a vision of health commodity availability for all....